

- A = Rear wall to rear panel
- B = Side wall to side panel
- C = Door seal lip (fire box) to the front of the floor protector
- E = Wall to side panel corner

All dimensions are in millimetres.  
All dimensions are set as a minimum guide only.

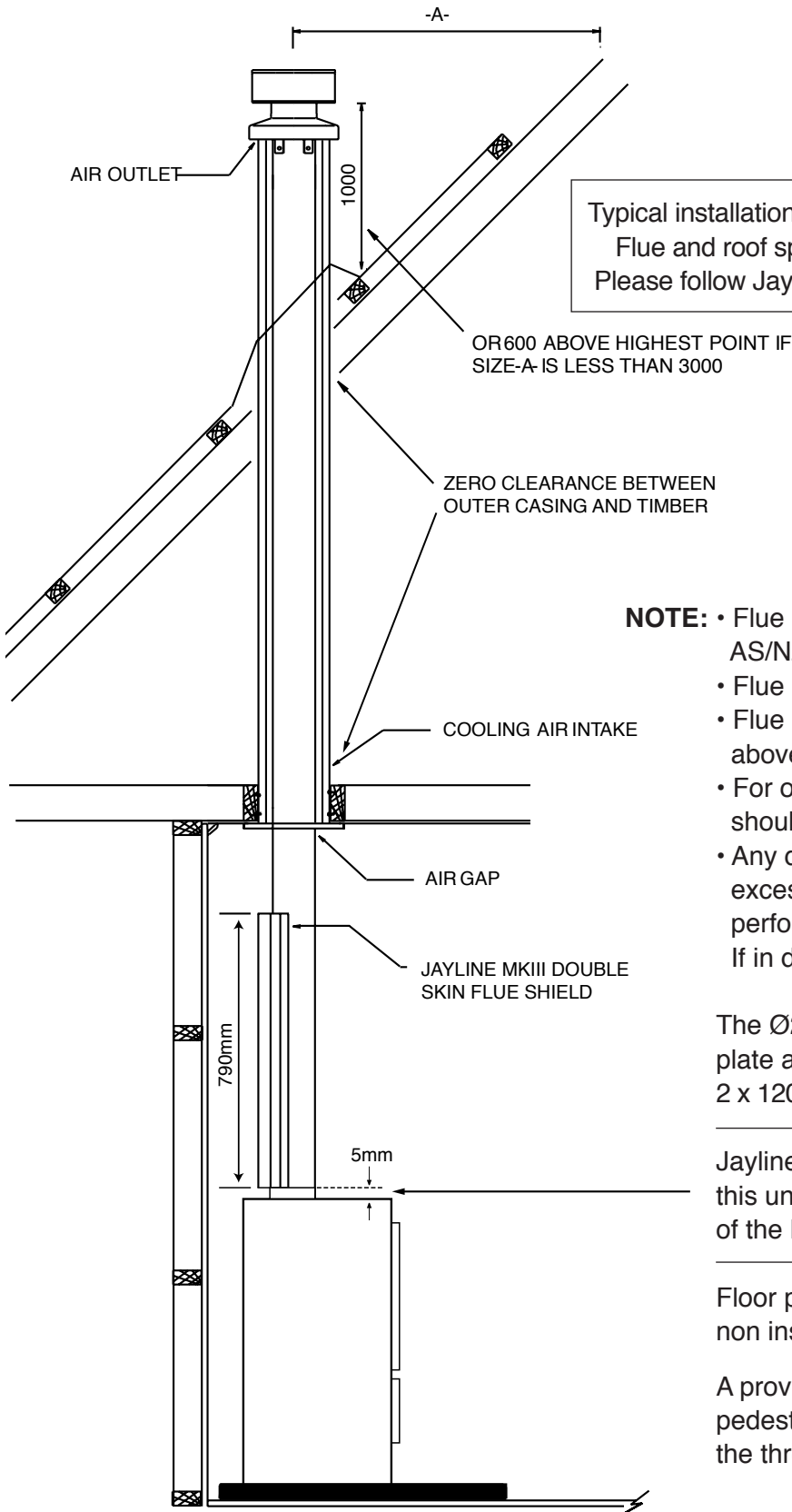
Minimum clearance requirements to combustible with Jayline MKIII flue kit and 790mm double skin flue shield

A	B	C	D	E	F	G	H	I	J	K	L	M	N	P	Q	R	S
200	460	300	95	350	386	700	651	134	670	1050	1585	950	664	1250	480	550	1290

Water Heating Option	Floor Protector	Emissions AS/NZS 4013:2014	Emissions AS/NZS 4013:2014	Efficiency AS/NZS 4012:2014	Emissions Ultra Low Emission Test ECAN-CM1	Emissions Ultra Low Emission Test ECAN-CM1	Efficiency Ultra Low Emission Test ECAN-CM1
No	Non insulated	0.3 g/kg	19.20 mg/MJ	78.1%	0.47 g/kg	30.10 mg/MJ	66.60%

This model has been tested to AS/NZS 2918:2001  
IF INSTALLED IN ACCORDANCE WITH THESE SPECIFICATIONS THE HEATER COMPLIES WITH AS/NZS 2918:2001 including Appendix F. The minimum clearance to combustible may be reduced if the combustible walls are shielded with an approved non-combustible material. Details of suitable shielding materials and appropriate clearance reduction factors are present in Section 3 of AS/NZS 2918:2001.

Clean Air Authorisation #153706  
#153807 (ULEB)  
Ecan Resource Consent # CRC154857



Typical installation shown complies with AS/NZS 2918:2001. Flue and roof specifications are recommendations only. Please follow Jayline MKIII Flue Kit installation instructions.

- NOTE:**
- Flue system must comply with Appendix F of AS/NZS 2918:2001.
  - Flue pipes should be  $\varnothing 150\text{mm}$  ( $\varnothing 6''$ ).
  - Flue pipe shall extend no less than 4600mm above the top of the floor protector.
  - For optimum performance the flue system should be vertical and have no bends.
  - Any deviation from the above (eg: if the flue is excessively long or short) may alter the heaters performance and nullify the Jayline warranty. If in doubt contact your Jayline supplier.

The  $\varnothing 200\text{mm}$  liner must be fitted from the ceiling plate and extend all the way to the flue cowl. 2 x 1200mm lengths are supplied in the MKIII Flue Kit.

Jayline MKIII double skin flue shield, tested on this unit, requires a 5mm gap between the top of the heater and the bottom of the shield.

Floor protector specs – New Zealand minimum non insulated floor protector only.

A provision has been made at the rear of the pedestal for seismic restraint by bolting through the three holes provided.

IF INSTALLED IN ACCORDANCE WITH THESE SPECIFICATIONS THE HEATER COMPLIES WITH AS/NZS 2918:2001 including Appendix F.